

Department of Economics

IMAP Program Guide



October 2022 Admission

International M.A. Program - Contents

1. Type of Courses
 2. Program Requirements
 3. Course Offerings
 4. Course Registration, Amendment, Cancellation, etc.
 5. Advisor
 6. Requirement for Completion (Master's Thesis)
 - (1) Path to M.A.
 - (2) Master's Thesis
 - (3) Admission to the International Ph.D. Program
 7. Completion in March
 8. Program Milestones
 9. The GPA System
- Appendix

1. Type of Courses

The International M.A. Program in Economics offers two major types of classes: (1) Lectures and (2) Seminars.

(1) Lectures (2 credits per course)

Lectures are given by a faculty member (or a group of faculty members). There are three major types as shown below.

| | | |
|----------------------------|--|---|
| <i>Regular Lectures</i> | Regularly offered in Int'l M.A. Program in Economics | |
| <i>Special Lectures</i> | Irregularly offered in Int'l M.A. Program in Economics | |
| <i>GSISS Joint Courses</i> | 1. Thesis Writing | Offered in GSISS (Credits do not count for M.A. degree) |
| | 2. Presentation & Discussion Skills | |

(2) Seminars (2 credits per course)

Seminars are led by your academic advisor and can include directed reading, dissertation advising, etc.

| | |
|--------------------------|-------------------------------------|
| <i>Seminars Ia, Ib</i> | Must be taken in a pair in 1st year |
| <i>Seminars IIa, IIb</i> | Must be taken in a pair in 2nd year |

- If you intend to complete the program in one year, you have to take all these Seminars in your 1st year.

2. Program Requirements

You must

Complete 32 credits, then write, submit and defend a traditional Master's thesis.

- The credits can be roughly divided into two; those by seminars and by the others.

| Credits | Conditions | | Note |
|------------|---|---------------------|-------------|
| 8 credits | From Seminars Ia, Ib, IIa, and IIb | | |
| 24 credits | From Lectures and Designated Special Lectures | | See Table-1 |
| | At least 4 credits | From "core" courses | See Table-1 |

- A 2.0 or better in your GPA is also required (max: 4.5).

Additional details of the Program

➤ Lectures in IPhD:

You are recommended to take the lectures offered in the International Ph.D. Program in Economics (shown in Table - 1), and earn up to 6 credits for your Master's degree. Such credits counted towards your Master's degree will not be valid towards your PhD degree (if you proceed to IPhD).

Table - 1

| Course Title | Credits to be earned | Limit |
|---|----------------------|--------------------|
| Advanced International Finance | 2 | 6 credits in total |
| Advanced International Trade | 2 | |
| Advanced Comparative Economic Studies | 2 | |
| Advanced Comparative Fiscal Studies | 2 | |
| Advanced Empirical Analysis of Economic Systems | 2 | |
| Structure and Dynamics of Developing Economies | 2 | |
| Statistical Systems | 2 | |
| Microeconomics | 2 | |
| Advanced Macroeconomics | 2 | |
| Statistics | 2 | |

➤ Other Countable Courses:

If you are proficient enough in Japanese language, you may take and earn credits from the courses other than in this English program (within limits) as shown in the table below.

| Courses / Category | Credits (Limits) |
|--|------------------------------|
| Master's lectures offered in the Department of Economics | Eligible for the Required 24 |
| Designated Master's lectures offered in Department of; | |
| Business Administration (GSISS), International and Business Law (GSISS) | Up to 8 (of the above 24) |
| Designated Master's lectures offered in Graduate School of; | |
| Education, Engineering, Environment and Information Sciences Urban Innovation (up to 6 credits) | Up to 6 (of the above 24) |
| Certain upper-level courses offered by the College of Economics | No Particular Limit |

Most of the above courses are offered in Japanese. You have to obtain an approval by the course instructor prior to your course registration.

➤ External Courses (noncountable for Master's):

You can take courses exterior to your program (IMAP) and earn credits, which do not count towards the Master's degree. Such courses are listed hereunder.

- GSISS Joint Courses
- Special Lectures (excluding those listed in Table – 1)
- Analysis III, Measure Theory, Stochastic Models, Engineering Mathematics Probability, Functional Analysis

(offered in the School of Engineering Science's Mathematical Science Program)

- Japanese Language Courses (offered by the International Student Center of YNU) - for international students only
- Foreign Language Courses and Lectures (offered in the Bachelor's Program in Economics)
- Introduction to Linear Mathematics (Algebra)II*, and Differential and Integral CalculusII*

These courses are generally taught in Japanese.

*You have to obtain an approval by the course instructor prior to your course registration.

➤ Credits earned during your Undergraduate Period:

The credits of the designated Master's lectures (offered in the Dept. of Economics) you earned when you were an undergraduate student can count for IMAP degree with the conditions hereunder.

| Condition(s) | Credits (Limits) |
|--|------------------|
| As long as the credits were not counted for your Bachelor's degree | Up to 10 |

3. Course Offerings

Because of the focused nature of the program, there is very little flexibility in the courses a student can take to complete the degree. Table - 2a and 2b below give the courses offered in the program and the recommended courses respectively to earn 32 credits required for the graduation.

Table - 2 a

| | Course Title | Credits Earned | Frequency |
|------------------------|---|----------------|-------------|
| Core Courses | Economic Systems | 2 | annual |
| | Economic Policy | 2 | annual |
| Other Elective Courses | International Economics and Public Policy | 2 | annual |
| | Applied International Trade | 2 | annual |
| | Public Finance | 2 | biennial ** |
| | International Finance | 2 | annual |
| | World Economy | 2 | biennial ** |
| | Economic Development | 2 | biennial ** |
| | Environment and Development | 2 | biennial ** |
| | Regional Strategies of Economic Development | 2 | biennial ** |
| Seminars (Compulsory) | Seminar Ia | 2 | annual |
| | Seminar Ib | 2 | annual |
| | Seminar IIa | 2 | annual |
| | Seminar IIb | 2 | annual |
| GSISS Joint Courses | Thesis Writing † | - | annual |
| | Presentation and Discussion Skills † | - | annual |

Table - 2 b (Recommended Courses)

| | Course Title | Credits Earned | Frequency |
|--------------|------------------|----------------|-----------|
| Core Courses | Microeconomics * | 2 | annual |
| | Macroeconomics * | 2 | annual |
| | Statistics * | 2 | annual |

Notes: * These courses are offered in the International PhD Program in Economics.

** 'Biennial' means 'offered once every two years'.

† GSISS Joint Course credits do not count toward the M.A. degree.

4. Course Registration, Amendment, Cancellation, etc.

(1) Procedure and Schedule

- You have to submit the [course registration application form](#) to the Graduate School Affairs Office first.
and
- By logging into [the Educational Affairs Information System](#), you can register for Fall 2021 courses (lectures and seminars), amend and/or cancel them if necessary during the respective periods described in the table below.

| | | |
|--------------|-----------------------|--|
| Registration | October 5 - 18, 2022 | Hours: 09:00 - 21:00 (Last day: up until 17:00) |
| Amendment | October 24 - 26, 2022 | |
| Cancellation | November 7 - 11, 2022 | |

Note: As for the Spring and Fall courses in the following year, you will have to follow a similar procedure (by paper and on the system) as above, for registration, amendment, and cancellation. The periods shall be announced in due course through the System.

You do not need to submit the course registration application form for amendment.

Please refer to the Academic Calendar 2021 via the following link.

[calendar-en_2021.pdf \(ynu.ac.jp\)](#)

(2) Course with the Same Title

After you earned credit(s) for a course, you cannot earn any more credits by taking the same course (course with the same title) again.

5. Advisor

- Each applicant for IMAP shall provide names of up to two preferred academic advisors in his/her online application, after which a matching exercise will be made during the screening for admission.
- As a general rule, the advisor of each student is chosen by the department from the full-time faculty members of the major that the student belongs to. However, a faculty member from another major can also be chosen as an advisor if necessary.
- The student's advisor is responsible for guiding the student until he/she completes the program.
- When it's necessary to change the advisor due to an unavoidable reason, it has to be approved by the department.
- You have to decide which courses you should take with the guidance of your advisor.

6. Requirement for Completion (Master's Thesis)

(1) Path to M.A.

Conditions: Completion of 32 credits, including 8 credits of Seminars (Ia & Ib, IIa & IIb).

GPA has to be 2.0 or above.

| | | | |
|----------------------|-----------------------------------|---|---|
| 1 st Year | October | Submit the course registration application form to the Graduate School Affairs Office and register for Fall 2022 courses on the Educational Affairs Information System, consulting with your advisor during the period (shown on the left). | |
| | From October 5 to 18, 2022 | | |
| | Fall semester | You have to develop your research proposal and carry out research under the guidance of your advisor through these semesters. | ↓ |
| 2 nd Year | | | ↓ |
| | Spring semester | You have to present your interim progress report (open to all faculty and students of the Economics dep.) No grade is assigned. | ↓ |
| | | Your advisor considers the report and give you necessary guidance. At this stage you should have made substantial progress and may be approaching to completion of your thesis. | ↓ |
| | June | You are required to submit your Master's thesis in June on condition that you have acquired 16 credits by the end of 1st year. | |
| | July | A committee of 2 faculty members including your main advisor shall be formed, and it will assess your thesis and give you an oral exam on the content of thesis in July. | |
| | (Defense) | After successful completion of thesis assessment and oral exam (defense), a copy of your thesis shall be held at the university. | |

(2) Master's Thesis

A master's thesis must contain the student's original contribution to the relevant literature.

(3) Admission to the International Ph.D. Program

Those wishing to go on to the International Ph.D. Program in Economics must apply for admission by the standard web application method. The application fee will be waived.

7. Completion in March

When you satisfy all the necessary conditions for the degree, you are not allowed to stay in the IMAP program over the end of the academic year (September).

However, in the situations described below, if your advisors approve your completion in March, you can opt for it.

| |
|-----------|
| Situation |
|-----------|

Delayed Completion

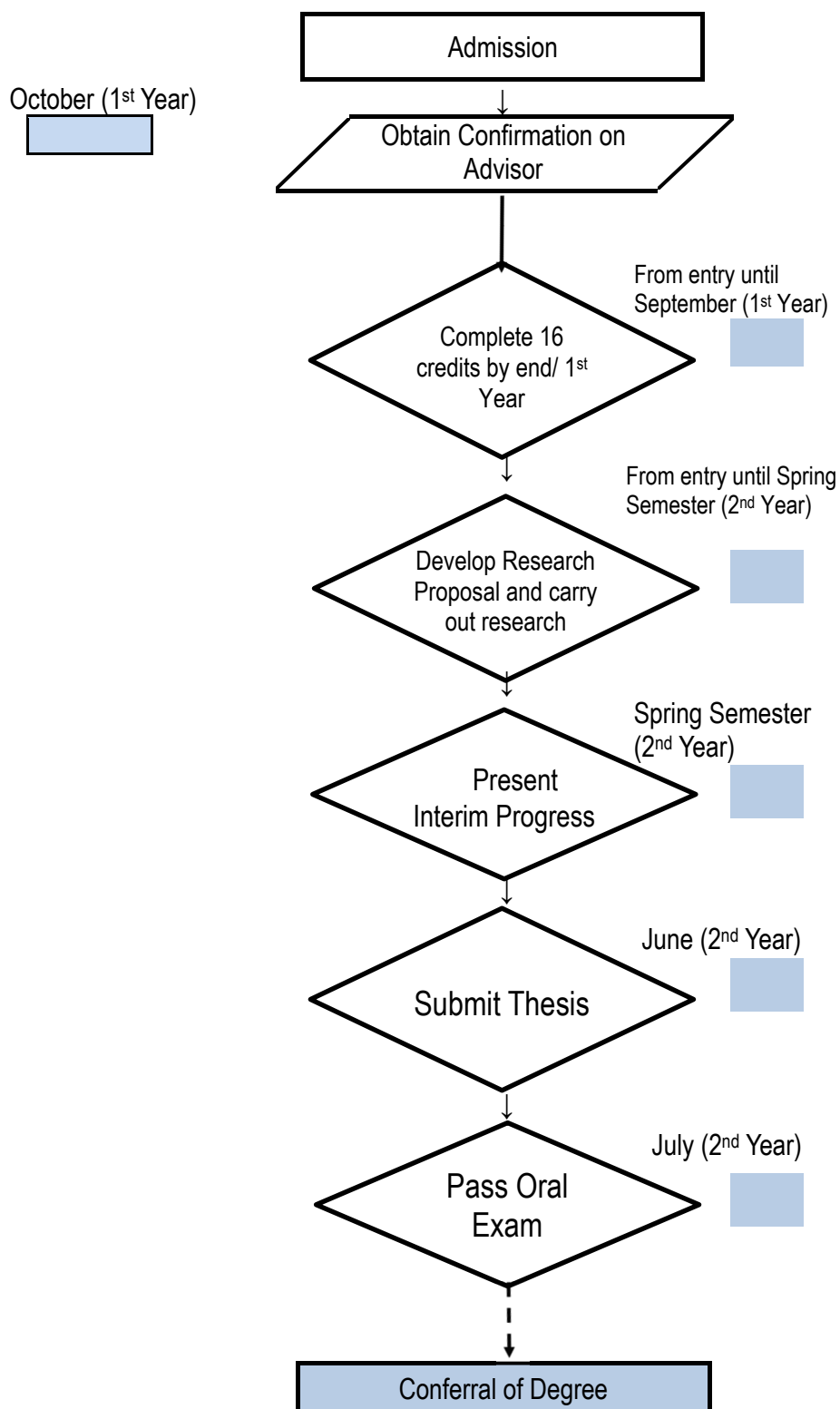
- Being enrolled for more than 2 years, you are expected to satisfy all the necessary conditions for completion in Fall semester in or after the 3rd year.

Note: You have to apply for this irregular ‘Completion in March’ during the application period designated by the Graduate School Affairs Office (in early October).

8. Program Milestones

Chart for Completion (in 2 Years)

for illustrative purposes only



Note: Be sure to adhere to the rules and requirements stated in the Program Catalogue.

* Dependent on intent to apply for the IPhD Program

9. The GPA System

- Students will be given GPs (Grade Points) according to their academic evaluation, and their GPA will be calculated based on the following formula.
- Calculation formula: $GPA = \sum (GPs \times \text{Number of credits}) / \text{Number of credits from all registered courses}$
- Only lectures are included in the GPA calculation and an overall GPA of 2.0 or better is required for completion. Along with the introduction of the GPA system, academic evaluations (scores) and GPs shall be given as follows:

| Academic evaluation | Scores | GPs |
|---------------------|--------------------|-----|
| Superior (S) | (100 to 90 points) | 4.5 |
| Excellent (A) | (89 to 80 points) | 4.0 |
| Good (B) | (79 to 70 points) | 3.0 |
| Fair (C) | (69 to 60 points) | 2.0 |
| Failing (F) | (59 and below) | 0.0 |

Appendix

(1) Classrooms

(2) Forms

[Course Registration Application](#)

[Pledge for Academic Conduct](#)

Both of the above forms are attached hereto.

(3) Regulations of Graduate School of International Social Sciences

(1) Classrooms

YNU Campus Map



COLLEGE OF ECONOMICS [Econ]

| | | |
|------|--------------------|--|
| N4-1 | Research Bldg. | 1F Department of Economics, Administration Office 3F Seminar Rooms (301-312,314-317) 3F Study Room of Master's Program (Economics)(313) including IMAP 3F Center for Economic and Social Studies in Asia |
| N4-2 | Lecture Hall 1 | |
| N4-3 | Lecture Hall 2 | |
| N4-4 | New Research Bldg. | 2F Research Support Office 4F - 5F Economics Faculty Offices |

COLLEGE OF BUSINESS ADMINISTRATION

| | | |
|------|--|--|
| N3-1 | Business Administration Research Bldg. | |
| N3-3 | Lecture Hall 2 | |
| N3-4 | Research Bldg. | 1F Graduate School Affairs Office 6F Study Room of Master's Program (Business Administration)(601~603) 7F Study Room of Doctoral Program (Business Administration) (701~703) |
| N3-5 | Lecture Hall 1 | |

GRADUATE SCHOOL OF INTERNATIONAL SOCIAL SCIENCES [GSISS]

| | | |
|------|--|--|
| N3-2 | Graduate School of International Social Sciences (GSISS) Bldg. | 3F Computer Room (301) 3F Computer Room (Satellite Lab) (302) 3F Library of International Social Science Studies (304) 5F Study Room of Doctoral Program in Economics (501) 5F Study Room of Doctoral Program (IB Law)(502) 5F Photocopier Room (503) 6F Seminar Rooms (602-609) 7F, 8F Economics Faculty Offices 8F Research Support Office |
| N4-5 | Law Bldg. | |

Course Registration Application

| | |
|-------------------|--|
| Year | Semester (Circle either one of two below.) Spring Fall |
| Student ID | Name |
| Phone | Email |

| Category | Course Title | Code | Semester | Day | Period | Instructor |
|----------|--------------|------|----------|-----|--------|------------|
| Lecture | | | | | | |
| | | | | | | |
| | | | | | | |
| | | | | | | |
| | | | | | | |
| | | | | | | |
| | | | | | | |
| Seminar | | | | | | |
| | | | | | | |
| | | | | | | |
| | | | | | | |
| Misc. | | | | | | |
| | | | | | | |
| | | | | | | |
| | | | | | | |
| | | | | | | |
| | | | | | | |

- ※ Please submit this form to the Graduate School Affairs Office after obtaining approval from your main advisor.
- ※ You must also register for courses on the Educational Affairs Information System during the designated period.

| | | |
|--|----------------------|--|
| | Advisor's signature: | |
|--|----------------------|--|

To the Dean of the Graduate School of International Social Sciences,

Pledge
for Academic Conduct

I hereby pledge not to plagiarize, fabricate, use a false identity, or commit any other offense against research ethics when writing the following academic document necessary for a degree or the permission of enrolment including: Master's thesis, PhD dissertation, and PhD research proposal. Furthermore, I pledge that I will proceed with the writing of all my academic documents with a full understanding of the Regulations on Academic Degrees of Yokohama National University.

Date (Month/ Day/ Year)

Graduate School of International Social Sciences, Yokohama National University

Specialization

Student ID

Name (print)

Signature

Regulations of the Graduate School of International Social Sciences at Yokohama National University

(Regulations No.33, March 28 2013)

(Purpose)

Article 1

Subject to the provisions of Articles 11 and 12 of the School Regulations of Yokohama National University (Regulations No. 202 (2004); hereinafter referred to as “Graduate School Regulations”), the purpose of these Rules shall be to regulate courses, the numbers of credits, and methods of undertaking courses, etc., for specialties of the Graduate School of International Social Sciences at Yokohama National University (hereinafter referred to as the “Graduate School”) and necessary matters for the Graduate School, provided, however, that matters related to the Law School/ Graduate School of International Social Sciences at Yokohama National University shall be subject to the provisions of the Detailed Regulations for the Law School/ Graduate School of International Social Sciences, Yokohama National University.

(Courses, etc.)

Article 2

- 1 Courses and the number of credits for departments at the Graduate School shall be separately regulated by the Dean of the Graduate School of International Social Sciences at Yokohama National University (hereinafter referred to as the “Dean”) with input from the faculty council (hereinafter referred to as the “ Faculty Council”).
- 2 15 hours of classes in courses (lectures and seminars) at the Graduate School shall constitute a single credit.
- 3 The term “academic dissertation(s)” refers to master’s theses and doctoral dissertations and includes the research outcomes of specific assignments given in connection with master's theses (hereinafter referred to as “Theses for Specific Assignments” in plural form or “Thesis for Specific Assignment” in singular form).

(Flexible Curriculum across Departments)

Article 3

- 1 Systematic educational programs related to multi-specialty fusion fields and specific assignments (hereinafter referred to as the “Flexible Curriculum across Departments”) shall be assigned in Ph.D. Programs.
- 2 The Flexible Curriculum across Departments regulated under the previous paragraph shall include those under the following Items.
 - (1) International Public Policy Education Programs
 - (2) Tax Law and Accounting Educational Programs
- 3 Matters necessary for the Flexible Curriculum across Departments shall be separately regulated by the Faculty Council.

(Advisors, etc.)

Article 4

- 1 In order to teach classes for Master’s Programs and provide guidance for courses and the writing of academic dissertations, (hereinafter referred to as “Research Guidance”), an advisor shall be allocated to each student.

- 2 In order to teach classes and provide Research Guidance for Ph.D. Programs, a single thesis advisor and two other advisors (hereinafter referred to as “Thesis Advisor” and “advisors”) shall be allocated to each student.
- 3 Thesis Advisor and advisors shall organize an advisors’ committee for the student.
- 4 Matters necessary for advisors, Thesis Advisors, etc., and advisors’ committees shall be separately regulated by the Faculty Council.

(Progression of the Program)

Article 5

Students must obtain the credits prescribed by the Faculty Council, with the guidance of the advisors and Thesis Advisors.

(System for Extending the Period of Registration)

Article 6

If students desire to extend the Period of Registration subject to Article 14 of the Graduate School Regulations, they must apply for permission from the head of the Graduate School in accordance with separate regulations.

(Undertaking of Courses at Graduate Schools of Other Universities, etc.)

Article 7

- 1 Students may take courses at graduate schools belonging to other universities (throughout, this includes foreign graduate schools) or at other graduate schools of this university after obtaining the approval of the Faculty Council.
- 2 Credits obtained for courses undertaken in accordance with the provisions of the previous paragraph may be accepted toward the completion of relevant programs, up to a prescribed number of credits.

(Undertaking Courses at Foreign Graduate Schools During Leaves of Absence)

Article 8

- 1 If it is deemed useful, credits obtained for courses undertaken at foreign graduate schools during leaves of absence may be accepted toward the completion of specific courses at the Graduate School after obtaining the approval of the Faculty Council.
- 2 The number of credits deemed to have been acquired in accordance with the provisions of the previous paragraph shall not exceed 10 credits per student, including the number of credits under the provisions of paragraph 2 of the previous Article.

(Research Guidance of Graduate Schools of Other Universities, etc.)

Article 9

- 1 Students may undertake research guidance at graduate schools of other universities or research institutes (hereinafter referred to as “Other Graduate Schools, etc.”) after obtaining the approval of the relevant faculty; provided, however, that if students in a Master’s Program are allowed to receive such Research Guidance, the period in which they may undertake the corresponding Research Guidance shall not exceed one year.
- 2 Subject to the provisions of the previous paragraph, it shall be possible to recognize Research Guidance undertaken at Other Graduate Schools, etc., as a part of the research guidance necessary for completion of the relevant Program.

(Requirements for Completion)

Article 10

- 1 With regard to the requirements for completion of a Master's Program, a student must be enrolled in the Program for more than two years, obtain 32 or more credits, satisfy the separately set standard of a Grade Point Average (GPA) of 2.0 or higher, undertake the relevant Research Guidance, and, thereafter, pass an examination on research outcomes concerning the student's master's thesis (i.e., the Thesis for Specific Assignment) and specific assignment, as well as a final exam; with regard to the period of enrollment, it shall be sufficient for a student who has achieved particularly superior research performance to be enrolled in the Graduate School for a minimum of one year.
- 2 Notwithstanding the provisions of the previous paragraph, with regard to the requirements for completion of a Master's Program by a student who has been allowed to extend the Period of Registration under the provisions of Article 6, such a student shall be enrolled for the corresponding period while undertaking the same, obtain 32 credits or more, satisfy the separately regulated standards for a GPA of 2.0 or higher, undertake the relevant Research Guidance, and, thereafter, pass an examination on research outcomes (i.e., the Thesis for Specific Assignment) related to a master's thesis and specific assignment, as well as a final exam.
- 3 For a student who desires to take the Qualifying Exams, instead of passing an examination on research outcomes for a master's thesis and specific assignment (i.e., the Thesis for Specific Assignment) and a final exam as described above, such a student shall be allowed to take a test and examination on basic research skills to earn a doctoral dissertation given by the Graduate School, as described in (1) and (2) below. In such a case, the expression "...obtain 32 credits or more..." above shall be changed to read "...obtain 36 credits or more..." and the expression "...undertake the relevant Research Guidance, and, thereafter..." shall be changed to read "...undertake the relevant Research Guidance, successfully gain acceptance for a doctoral dissertation research project plan or pass a term paper, and, thereafter...."
 - (1) The test will ascertain the candidate's advanced expertise in relation to the relevant specialty field and basic background knowledge in associated fields, which should be acquired or cultivated in the corresponding Master's Program.
 - (2) The examination will assess abilities necessary to carry out research on the student's own initiative at a level appropriate for doctoral dissertations, which should be acquired in the corresponding Master's Program.
- 4 With regard to the requirements for completion of Ph.D. Programs, a student must be enrolled in the program for more than three years (or only two for a student who has completed a professional degree program such as Law School), obtain 20 credits or more, have a GPA of 2.0 or higher, undertake the relevant Research Guidance, and, thereafter, pass a doctoral dissertation examination as well as a final exam; however, for a student who has achieved particularly superior research performance the minimum period of enrollment shall be one year.
- 5 Subject to the proviso in paragraph 1, with regard to the requirements for completion of a Ph.D. Program for a student who has completed a Master's Program in a period of less than two years due to particularly superior research performance (including students with a period of enrollment in another graduate school), the term "one year" in the previous paragraph shall be changed to read "more than the period resulting when the period of enrollment in the corresponding Master's Program (and limited to a period of no more than two years) is deducted from three years."
- 6 With regard to the requirements for completion of a Ph.D. Program for a student who has completed a Master's Program, or a professional degree program at another graduate school for which the standard period is between one and two years, the term "one year" in paragraph 4 shall be changed to

read “ the period resulting when the period of the Master’s or professional program is deducted from three years.”

- 7 Notwithstanding the provisions of the previous three paragraphs, with regard to the requirements for completion of a Ph.D. Program for a student who has been allowed to extend the Period of Registration under the provisions of Article 6, that student shall be enrolled for the corresponding period while undertaking the same, obtain 20 credits or more, maintain a GPA of 2.0 or higher, undertake the relevant Research Guidance, and, thereafter, pass a doctoral dissertation examination as well as a final exam.
- 8 Examinations for academic dissertations shall be subject to the Regulations on Academic Degrees of Yokohama National University.

(Period for Submission of Academic Dissertation)

Article 11

Academic dissertations and documents required by the Faculty Council must be submitted within a period determined by the Graduate School.

(Administration Affairs)

Article 12

Administration affairs for the Graduate School shall be handled by the Social Science Administration Department.

(Miscellaneous Provisions)

Article 13

In addition to the information provided hereunder, matters related to the Graduate School shall have additional requirements set by the Faculty Council.

Supplementary Provisions

These Regulations shall become effective on April 1, 2013.