

Ö^] æð ^} oÁ ÁÒ&[} [{ æ•Á

Q OEÚÁÚ! [* !æ ÁÕ˘ ã^Á



U&ç à^!ÁGEÎ ÁŒ{ ã•q } Á

M.A. Program

Type of Courses

Program Requirements

Electing QE or Thesis Option

Two Recommended Paths and Course Offerings

Procedures for Course Registration/ “Adding” and “Dropping” Courses/Courses with the Same Name

Advisor

For those opting to take the QEs

Path to M.A.

Conditions for Submitting a Term Paper or a Ph.D. Thesis Proposal

Admission to the International Ph.D. Program

Conditions for Taking the QEs and Advanced QE in the First Year

For those opting to write the Master’s Thesis

Path to M.A.

Conditions for Writing a Master’s Thesis

Master’s Thesis

The Defense of a Master’s Thesis

Admission to the International Ph.D. Program

Early Completion

Program Milestones

The GPA System

Appendix

Type of Courses

The International M.A. Program in Economics offers two major types of classes: (1) Lectures and (2) Seminars.

1. Lectures (2 credits per course)

These are lectures by a faculty member or faculty members. There are three major types of lecture:

- *Lectures* regularly offered in International M.A. Program in Economics.
- *Special Lectures* irregularly offered in International M.A. Program in Economics.
- *GSISS Joint Courses* on thesis writing, presentation & discussion skills in English offered in Graduate School of International Social Sciences (credits do not count towards the M.A. degree).

2. Seminars

Seminars are led by the student's advisor and can include directed reading, dissertation advising, etc.

- Seminars I a, I b, II a, II b (2 credits per course)
- Seminars I a and I b must be taken in pairs in the first year and Seminars II a, II b must be taken in pairs in the second year. Students intending to complete the program in one year must take Seminars I a, I b, II a, and II b in the first year.

Program Requirements

Students must either:

- Complete 36 credits from the courses in the table on page 7, pass Qualifying Exams (QE) and then submit either a “term paper” or Ph.D. thesis proposal.
- or
- Complete 32 credits from the courses in the table plus write, submit and defend a traditional Master’s thesis.
 - Of the 36 credits (32, if Thesis option) credits, 8 credits must be from Seminar I a, I b, II a, II b, regardless of the option chosen.
 - 28 (24, if Thesis option) credits must be from lectures and the designated Special Lectures in the table on page 7.
 - Of these 28 credits (24, if Thesis option) credits, at least 4 credits must be from the “core” courses in the table on page 7.
- ✧ Students are also required to have an overall 2.0 GPA (max: 4.5) or better for all courses taken at YNU.

Additional details of the Program

- Students who have sufficient Japanese ability may take and receive credits from certain Master’s lectures offered in the Department of Economics which are conducted in Japanese. These credits count towards the required 28 (24, if Thesis option) credits mentioned above.
- Up to 8 credits of these 28 (24, if Thesis option) credits may be from the designated Master’s lectures offered in Department of Business Administration, Department of International and Business Law, the Law School of the Graduate School of International Social Sciences (GSISS), the Graduate School of Education (up to 6 credits), the Graduate School of Engineering (up to 6 credits), the Graduate School of Environment and Information Sciences (up to 6 credits), the Graduate School of Urban Innovation (up to 6 credits), and certain upper-level courses offered by the College of Economics, most of which are offered in Japanese, if the student’s language proficiency is sufficiently high. However, prior approval from the course instructor must be obtained before course registration.
- Some courses outside the program may be taken for credit, but the credits earned do not count towards the degree. These courses include GSISS Joint Courses, Special Lectures (other than those designated by the Program in the table below), Analysis III, Measure Theory, Stochastic Models, Engineering Mathematics

Probability, Functional Analysis offered in School of Engineering Science's Mathematical Science Program, Japanese language courses offered by the International Students Center of YNU (for international students only), other foreign language courses and lectures offered in the bachelor's program in economics, Introduction to Linear Mathematics (Algebra) II, and Differential and Integral Calculus II. These courses, generally taught in Japanese, may be taken based on sufficient language proficiency.

Notice: Prior approval from the course instructor must be obtained before course registration for Introduction to Linear Mathematics (Algebra) II and Differential and Integral Calculus II.

- Students who took the designated Master's lectures offered in Department of Economics when they were undergraduate students can use up to ten credits toward the master's degree unless they used the credits toward their bachelor's degree.
- Up to 4 credits may be taken from the following lectures offered in the International Ph.D. Program in Economics. The credits earned will count toward the Ph.D. degree, but not toward the M.A. degree.

Advanced International Economics	(2 credits)
Adv. Labor Economics	(2 credits)
Adv. International Trade Policy	(2 credits)
Adv. Comparative Econ. Studies	(2 credits)
Adv. Empirical Analysis of Econ. Systems	(2 credits)
Structure and Dynamics of Dev. Econ.	(2 credits)
Statistical Systems	(2 credits)

- The students are not allowed to stay in the Program past the end of the academic year when they satisfy all the requirements for the M.A. degree.
- The students can graduate from the Program at the end of the Spring semester of the first year provided that they meet all the requirements for the M.A. degree and they will have stayed in the Program for at least one year by the time they leave the Program. See Early Completion for details.

Electing QE or Thesis Option

Students must consult their advisors and elect either the QE or Thesis option by **Friday, October 14, 2016** after entering the program. Students may change their option (QE or Thesis) at the beginning of the Spring semester or at the beginning of the second year conditional upon their advisor's approval.

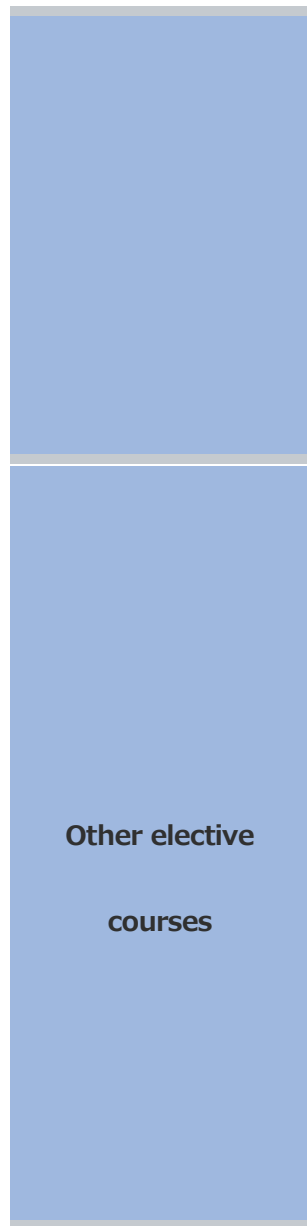
Two Recommended Paths and Course Offerings

Because of the focused nature of the program, there is very little flexibility in the courses a student can take to complete the degree. The table below gives two recommended paths, one specialized mainly in International Economics and Public Economics and the other in Comparative Economics. This is a recommended path for those opting to take the Qualifying Exams (QE). For those who choose to write a thesis, four (4) less credits (a total of 32) are required. Of course, students can register and receive more than the minimum credits if they so choose.

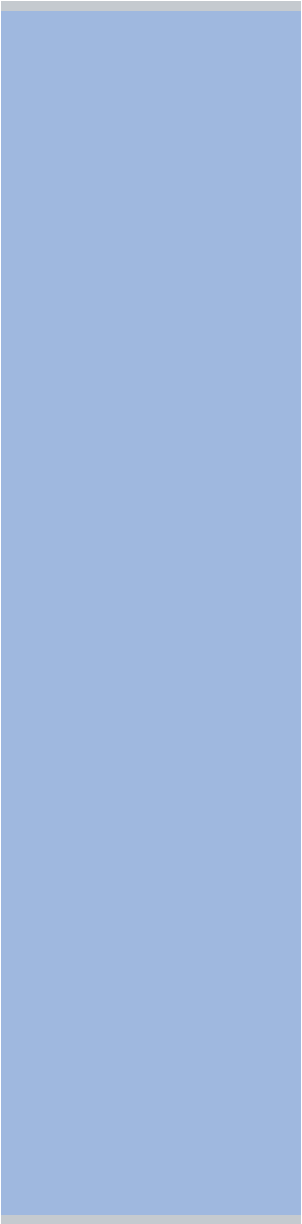
(A) International Economics and Public Economics

(B) Comparative Economics

	Course Title	Credits Earned		Frequency
		Path (A)	Path (B)	
Core Courses	Microeconomics I	2	2	annual
	Macroeconomics I	2	2	annual



Statistics I	2	2	annual
Economic Systems	2	2	annual
Economic Policy	2	2	annual
Microeconomics II	2		annual
Macroeconomics II	2		annual
Statistics II	2	2	annual
International Economics and Public Policy	2		annual
Applied International Trade	2		annual



Public Economics	2	2	annual
Public Finance		2	biyearly
International Finance	2	2	biyearly
World Economy *	2	2	annual
Economic Development		2	biyearly
Environment and Development		2	biyearly
Economic Planning and Energy Policy		2	annual
Asian and African Economies		2	biyearly

Seminars

Applied Econometrics	2		annual
Applied Microeconomics	2		annual
Technology Strategy for Development			biyearly
Regional Strategies of Economic Development			biyearly
Japanese Culture and Society			biyearly
Seminar I a	2	2	annual
Seminar I b	2	2	annual
Seminar II a	2	2	annual

	Seminar II b	2	2	annual
GSISS Joint Courses	Thesis Writing †			annual
	Presentation and Discussion Skills †			annual
Total Credits earned		36	36	

Notes: † GSISS Joint Course credits do not count toward the M.A. degree.

* IMAP students who wish to take "World Economy" are required to register for "World Economy" (an IMAP course) and attend classes of "Global Economy and Multinational Corporations" (a course with the same contents provided by Public Policy and Taxation program), by successful completion of which they will earn credits for the former. And they must not register for both courses at the same time. In addition, Non-IMAP students of Graduate School of International Social Sciences are not supposed to register for "World Economy" in the academic year 2016-2017.

Procedures for Course Registration/“Adding” and “Dropping” Courses /Courses with the Same Name

1. Course Registration

- Students must
 - submit the [course registration application form](#) to the Graduate School Affairs Office,
 - log into [the Educational Affairs Information System](https://risyu.jmk.ynu.ac.jp/gakumu_portal) (https://risyu.jmk.ynu.ac.jp/gakumu_portal) and register for Fall 2016 courses (lectures and seminars) during the **Monday, October 3 to Wednesday, October 19, 2016** period. Registration hours are **from 9:00 am until 9:00 pm (last day until 5:00 pm)**.
 - Students admitted in Fall 2016 can register for Fall 2016 courses only during the period.
 - Spring 2017 and Fall 2017 courses must be registered for during **Friday, April 7 to Friday, April 21, 2017, and Thursday, October 5 to Friday, October 20, 2017**. Students may amend (“add” to or “drop”) the registered Fall 2016 courses during the **Monday, October 24 to Wednesday, October 26, 2016** period and the registered Spring 2017 and Fall 2017 courses during **Monday, May 8 to Wednesday, May 10, 2017, and Wednesday, October 25 to Friday, October 27, 2017** using the Educational Affairs Information System. Students do not need to complete the course registration application form for the amendment of the courses registered.

2. “Dropping” Courses

If students wish to cancel registration in a course, they must use the Educational Affairs Information System during the following periods.

- Fall 2016 semester: **Monday, November 7 to Friday, November 11, 2016**
- Spring 2017 and Fall 2017 semesters: **Monday, May 15 to Friday, May 19, 2017, and Monday, November 6 to Friday, November 10, 2017**

3. Registration for Courses with the Same Name

After a student has received credit for a course, the student cannot acquire more credits by taking a course with the same name again.

Advisor

- The student's advisor is responsible for guiding the student until he/she completes the program.
- The department gives consideration to the student's interests, preferred approach, and academic background as well as fields of research/education of [the faculty members](#), and determines the student's advisor after admission. The student shall download, fill out, and submit [the questionnaire](#) on his/her interests and preferred approach by the following due date.

Tuesday, October 11, 2016

- As a general rule, the advisor of each student is chosen by the department from the full-time faculty members of the major that the student belongs to. However, a faculty member from another major can also be chosen as an advisor.

For those opting to take the Qualifying Exams (QEs)

Path to M.A.

➤ October of the 1st year:

- The advisor of each student is chosen by the department. The student shall download, fill out, and submit [the questionnaire](#) on his/her interests and preferred approach by **Tuesday, October 11, 2016**.
- The student choosing this option must complete 36 credits, including 8 credits of Seminars (Ia & Ib and IIa & IIb). The student decides which courses to take according to the guidance of the advisor. The student must submit the course registration application form to the Graduate School Affairs Office, and register for Fall 2016 courses using the Educational Affairs Information System during the **Monday, October 3 to Friday, October 19, 2016** period.
- Students must consult their advisors and elect the QE option by **Friday, October 14, 2016**.

➤ February of the 2nd year:

QEs will be offered twice a year, and are generally taken in the student's third semester, i.e. February of their second year. The QEs will be offered again in July in the same year. In the event a student fails one or more QEs, they can retake them again the next time they are offered.

- For Path A students, they must successfully pass three QEs, one in Micro, a second in Macro, and a third in Statistics/Econometrics.
- For Path B students, they must pass one QE (QE paper and oral exam) in the field of Comparative Economics.

➤ Spring semester of the 2nd year:

After passing their QEs, students must write and submit a "term paper" or a Ph.D. thesis proposal under their advisor's supervision.

➤ July of the 2nd year:

- The student who has passed the required QEs by February of the second year submits a term paper or a Ph.D. thesis proposal in June of the 2nd year.
- The student who has not passed the required QEs by February of the 2nd year and retakes them in July of the same year must be prepared to submit a term paper or a Ph.D thesis proposal also in July, immediately after passing the QEs, to complete the Program in September of the same year.
- A committee of three persons will be formed which is comprised of the main advisor and two other members of the Economics faculty. They will assess the "term paper" or the Ph.D. thesis proposal and give the student an oral exam in July of the second year.

Conditions for Submitting a Term Paper or a Ph.D. Dissertation Proposal

Only those students who pass the required QEs can submit a term paper or a Ph.D. thesis proposal.

Admission to the International Ph.D. Program

- For those wishing to go on to the PhD program later, the Advanced QE is required. The Advanced QEs are offered at the same time as QEs are offered.
 - The Path A student must take and pass one of three Advanced QE (also in Micro, Macro, or Statistics/Econometrics) and submit a “term paper” or a Ph.D. proposal.
 - The Path B student must take and pass one Advanced QE (AQE paper and oral exam) in the field of Comparative Economics and submit a “term paper” or a Ph.D. proposal. The QE paper can be replaced by the submission of AQE paper.

Conditions for Taking the QEs and Advanced QE in the First Year

- The Path A students can take the QEs and Advanced QE in July of the first year if their course grades in Microeconomics I , Macroeconomics I , and Statistics I are all “S”s and if their midterm performance in Microeconomics II , Macroeconomics II and Statistics II , as reported by the course instructors to the student’s advisor, are all “S”s.
- The Path B students can take the QE and Advanced QE in July of the first year if they receive permission from their advisor.

For those opting to write the Master's Thesis

Path to M.A.

- **October of the 1st year:**
 - The advisor of each student is chosen by the department. The student shall download, fill out, and submit [the questionnaire](#) on his/her interests and preferred approach by **Tuesday, October 11, 2016**.
 - The student choosing this option must complete 32 credits, including 8 credits of Seminars (Ia & Ib and IIa & IIb). The student decides which courses to take according to the guidance of the advisor. The student must submit the course registration application form to the Graduate School Affairs Office, and register for **Fall 2016** courses using the Educational Affairs Information System during the **Monday, October 3 to Wednesday, October 19, 2016** period.
- Students must consult their advisors and elect the Thesis option by **Friday, October 14, 2016**.
- **From Fall semester of the 1st year through Spring semester of the 2nd year:**
The student develops his/her research proposal and carries out the research under the guidance of the advisor.
- **Spring semester of the 2nd year:**
The student presents his/her interim progress report (open to all faculty and students of the Economics department.) No grade is assigned. The advisor considers the report and decides what guidance is needed. Obviously, at this stage the student should have made substantial progress and be nearing completion of their thesis.
- **June of the 2nd year:**
The student who has acquired 16 credits by the end of first year submits a Master's thesis in June of the 2nd year.
- **July of the 2nd year:**
A committee of three persons will be formed which is comprised of the main advisor and two other members of the Economics faculty. They will assess the thesis and give the student an oral exam on the contents of the thesis in July of the second year. After successful completion of thesis and oral defense, a copy of the thesis will be held at the university.

Conditions for Writing a Master's Thesis

Students who have been enrolled in the International M.A. Program for more than a year and have acquired 16 credits by the end of first year are qualified to submit a Master's thesis. Students must submit theses by the deadline specified by GSISS.

Master's Thesis

A master's thesis must contain the student's original contribution to the relevant literature.

The Defense of a Master's Thesis

The committee of three will assess the thesis and give the student an oral exam on the contents of the thesis in July of the second year.

Admission to the International Ph.D. Program

Those wishing to go on to the International Ph.D. Program in Economics must apply for admission by the standard web application method. The application fee will be waived.

Early Completion

Outstanding students may complete the program in one year by electing the QE option, taking and successfully completing Seminars I a and II a in Fall semester, I b and II b in Spring semester, passing all the QEs, submitting a term paper or a Ph.D. thesis proposal, passing a review and an oral exam in the first year provided that they meet all the other requirements concerning credits for the degree conferment. By also passing the Advanced QE in the first year, the students can be admitted to the International Ph.D. Program in Economics upon completion of the International M.A. Program in Economics. The students are not allowed to stay in the International M.A. Program past the end of the academic year when they satisfy all the requirements for the M.A. degree.

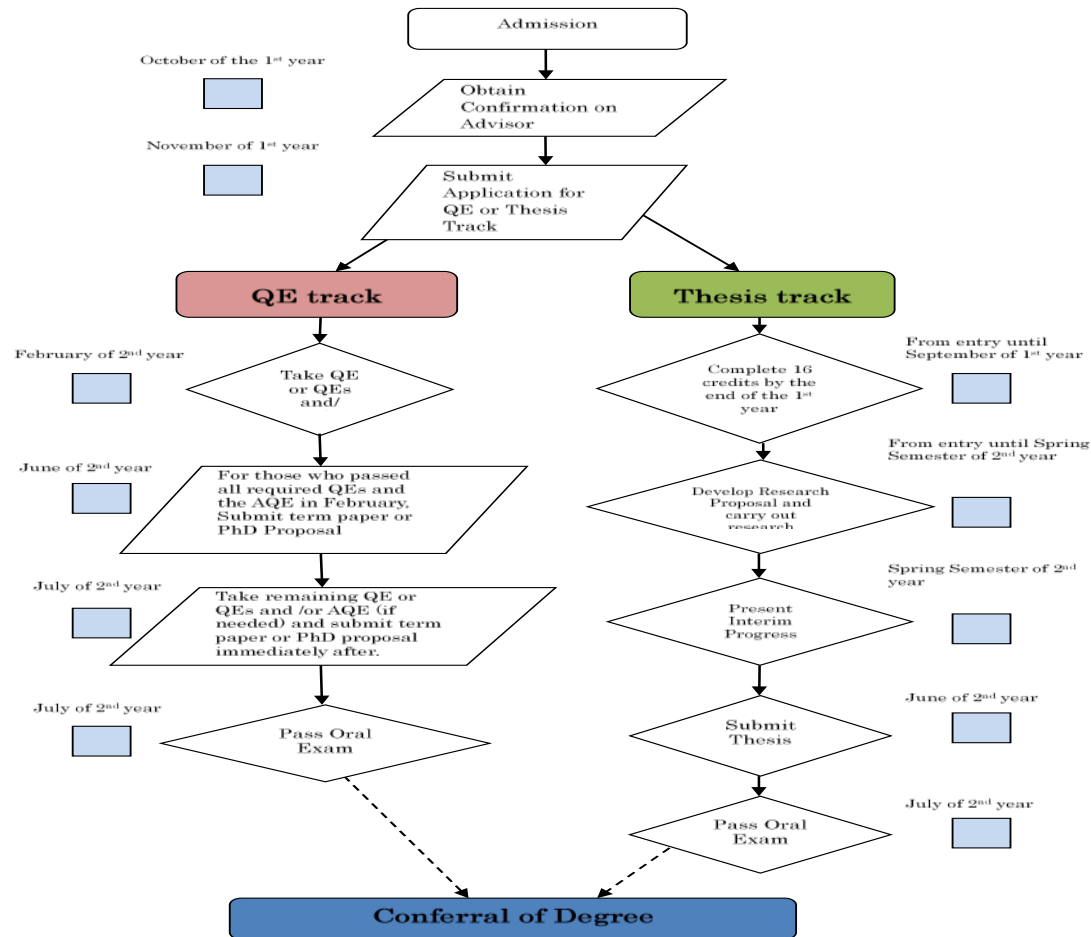
✧ No early completion option is available for students electing the Master's thesis option.

Conditions for Taking the QEs and Advanced QE in the First Year

- The Path A students can take the QEs and Advanced QE in July of the first year if their course grades in Microeconomics I , Macroeconomics I and Statistics I are all "S"s and if their midterm performance in Microeconomics II Macroeconomics II and Statistics II , as reported by the course instructors to the student's advisor, are all "S"s.
- The Path B students can take the QE and Advanced QE in July of the first year if they receive permission from their advisor.

Program Milestones

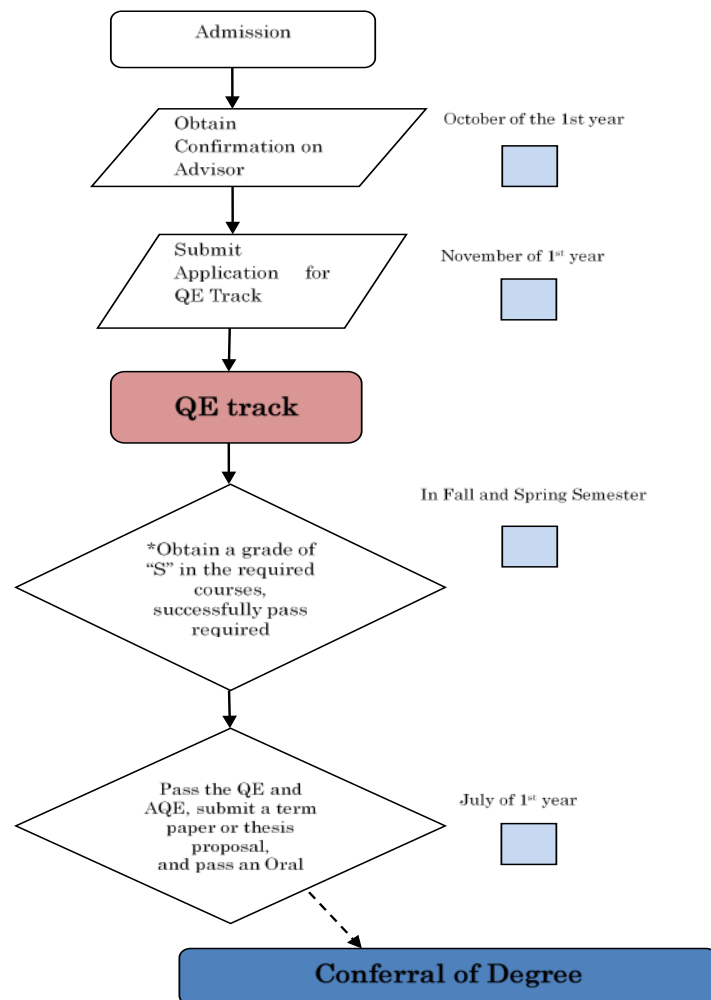
2 Years (For illustrative purposes only)



Note: Be sure to adhere to the rules and requirements stated in the Program Catalogue.

*Dependant on intent to apply to the IPhD Program

1 Year (For illustrative purposes only)



Note: Be sure to adhere to the rules and requirements stated in the Program Catalogue.

*Path A must obtain an "S" Grade in Microeconomics I, Macroeconomics I, Statistics I; and by the mid-term point of the Spring Semester receive "S" Evaluations in Microeconomics II, Macroeconomics II, and Statistics II.

**Path A and Path B, students must also pass Seminars Ia and IIa in the Fall semester, and Ib and IIb in the Spring semester.

Path B students may take the QE and AQE in July of the first year if granted permission from their advisor.

*There is no Early Completion option for students electing the Master's thesis option.

The GPA System

- Students will be given GPs (Grade Points) according to their academic evaluation, and their GPA will be calculated based on the following formula.
- Calculation formula: $GPA = \sum (GPs \times \text{Number of credits}) / \text{Number of credits from all registered courses}$
- Only lectures are included in the GPA calculation and an overall GPA of 2.0 or better is required for completion. Along with the introduction of the GPA system, academic evaluations (scores) and GPs shall be given as follows:
 - Superior (S) (100 to 90 points) 4.5
 - Excellent (A) (89 to 80 points) 4.0
 - Good (B) (79 to 70 points) 3.0
 - Fair (C) (69 to 60 points) 2.0
 - Failing (F) (59 and below) 0.0

Appendix

Academic Calendar

Classrooms

Timetable

Forms

Regulations of Graduate School of International Social Sciences

Academic Calendar

University-wide Academic Calendar

The Number of Classes

Fall 2016

	Sun	Mon	Tue	Wed	Thu	Fri	Sat	Notes
Oct.							1	
	2	3	4	5	6	7	8	Fall semester begins on Oct. 3. Fall Entrance Ceremony, Oct. 6.
	9	10	11	12	13	14	15	Monday classes held on Oct. 11.
	16	17	18	19	20	21	22	
	23	24	25	26	27	28	29	University Festival “Tokiwasai”, Oct. 28 – 31. Preparation on Oct. 28.

	30	31						
Nov.			1	2	3	4	5	
	6	7	8	9	10	11	12	Make-up classes held in the 6 th periods, Nov 7 - 11.
	13	14	15	16	17	18	19	
	20	21	22	23	24	25	26	
	27	28	29	30				
Dec.					1	2	3	
	4	5	6	7	8	9	10	Make-up classes held in the 6 th periods, Dec 5 - 9.
	11	12	13	14	15	16	17	
	18	19	20	21	22	23	24	
	25	26	27	28	29	30	31	Friday classes held on Dec. 27.
Jan.	1	2	3	4	5	6	7	Winter recess, Dec. 28 – Jan. 5.
	8	9	10	11	12	13	14	Coming of Age Day on Jan. 9.
	15	16	17	18	19	20	21	National Center Test for University Admissions. YNU closed Jan. 13 – 15.
	22	23	24	25	26	27	28	Make-up classes held in the 6 th periods, Jan 23 - 27.
	29	30	31					
Feb.				1	2	3	4	
	5	6	7	8	9	10	11	TOEFL ITP given on Feb. 6. (for undergraduate)
	12	13	14	15	16	17	18	Fall semester final exams, Feb. 7 – 14.

	19	20	21	22	23	24	25	Spring recess, Feb. 15 – Mar. 31.
	26	27	28					YNU Entrance Exam I , Feb. 25 – 26.
Mar.				1	2	3	4	
	5	6	7	8	9	10	11	
	12	13	14	15	16	17	18	YNU Entrance Exam II , Mar. 12 – 13.
	19	20	21	22	23	24	25	Graduation Ceremony, Mar. 24.
	26	27	28	29	30	31		Fall semester ends on Mar. 31.
Subtotal (before replacements)		14	15	15	15	14		Excludes the TOEFL-ITP day. Includes the final exam days.
Subtotal (after replacements)		16	16	16	16	16		Excludes the TOEFL-ITP day. Includes the final exam days.
Total		32	32	32	32	32		

Spring 2017

	Sun	Mon	Tue	Wed	Thu	Fri	Sat	Notes
Apr.							1	Spring recess, Apr. 1-6. Spring Entrance Ceremony, Apr. 4.
	2	3	4	5	6	7	8	TOEFL ITP given on Apr. 5. (for undergraduate) Spring semester begins on Apr.7.
	9	10	11	12	13	14	15	
	16	17	18	19	20	21	22	

	23	24	25	26	27	28	29	
	30							
May		1	2	3	4	5	6	No classes on May 1 - 2.
	7	8	9	10	11	12	13	
	14	15	16	17	18	19	20	Make-up classes held in the 6 th periods, May 15 - 19. University Festival “Seiryosai”, May 20 - 21. Preparation on May 20.
	21	22	23	24	25	26	27	
	28	29	30	31				
Jun.					1	2	3	University Foundation Day on Jun. 1.
	4	5	6	7	8	9	10	
	11	12	13	14	15	16	17	
	18	19	20	21	22	23	24	
	25	26	27	28	29	30		
Jul.							1	
	2	3	4	5	6	7	8	
	9	10	11	12	13	14	15	Make-up classes held in the 6 th periods, Jul. 10 - 14.
	16	17	18	19	20	21	22	Classes will be held on Jul. 17, a public holiday.
	23	24	25	26	27	28	29	Spring semester final exams, Jul. 28 – Aug. 4.
	30	31						
Aug.			1	2	3	4	5	Summer recess, Aug. 5 – Sep. 30.
	6	7	8	9	10	11	12	
	13	14	15	16	17	18	19	

	20	21	22	23	24	25	26	
	27	28	29	30	31			
Sep.						1	2	
	3	4	5	6	7	8	9	
	10	11	12	13	14	15	16	Graduation Ceremony, Sep. 15.
	17	18	19	20	21	22	23	
	24	25	26	27	28	29	30	Spring semester ends on Sep. 30.
Subtotal (before replacements)		16	16	16	16	17		Includes the final exam days.
Subtotal (after replacements)		16	16	16	16	17		Includes the final exam days.

Fall 2017

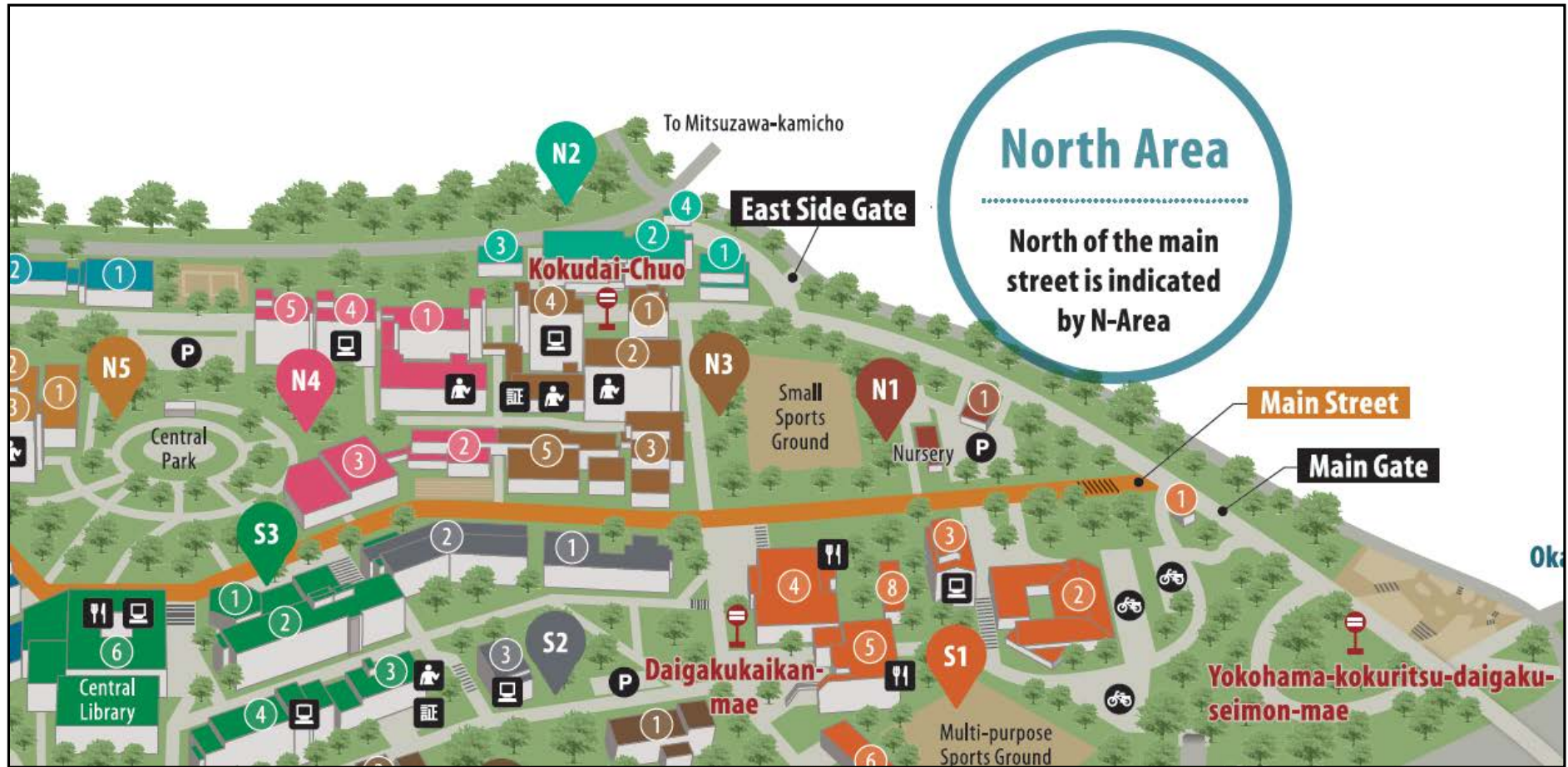
	Sun	Mon	Tue	Wed	Thu	Fri	Sat	Notes
Oct.	1	2	3	4	5	6	7	Fall semester begins on Oct. 5. Fall Entrance Ceremony, Oct. 5.
	8	9	10	11	12	13	14	Classes will be held on Oct. 9, a public holiday.
	15	16	17	18	19	20	21	
	22	23	24	25	26	27	28	
	29	30	31					
Nov.				1	2	3	4	University Festival "Tokiwasai", Nov. 3 – 5. Preparation on Nov. 3.
	5	6	7	8	9	10	11	Make-up classes held in the 6 th periods, Nov 6 - 10.
	12	13	14	15	16	17	18	

	19	20	21	22	23	24	25	
	26	27	28	29	30			
Dec.						1	2	
	3	4	5	6	7	8	9	
	10	11	12	13	14	15	16	
	17	18	19	20	21	22	23	
	24	25	26	27	28	29	30	Winter recess, Dec. 26 – Jan. 4.
	31							
Jan.		1	2	3	4	5	6	
	7	8	9	10	11	12	13	Coming of Age Day on Jan. 8.
	14	15	16	17	18	19	20	National Center Test for University Admissions. YNU closed Jan. 12 – 14.
	21	22	23	24	25	26	27	Make-up classes held in the 6 th periods, Jan 22 - 26.
	28	29	30	31				
Feb.					1	2	3	
	4	5	6	7	8	9	10	TOEFL ITP given on Feb. 14. (for undergraduate)
	11	12	13	14	15	16	17	Fall semester final exams, Feb. 7 – 14.
	18	19	20	21	22	23	24	Spring recess, Feb. 15 – Mar. 31.
	25	26	27	28				YNU Entrance Exam I , Feb. 25 – 26.
Mar.					1	2	3	
	4	5	6	7	8	9	10	
	11	12	13	14	15	16	17	YNU Entrance Exam II , Mar. 12 – 13.
	18	19	20	21	22	23	24	Graduation Ceremony, Mar. 23.

	25	26	27	28	29	30	31	Fall semester ends on Mar. 31.
Subtotal (before replacements)		16	17	16	16	16		Excludes the TOEFL-ITP day. Includes the final exam days.
Subtotal (after replacements)		16	17	16	16	16		Excludes the TOEFL-ITP day. Includes the final exam days.
Total		32	33	32	32	33		

Classrooms

YNU Campus Map



COLLEGE OF ECONOMICS [Econ]

N4-1	Research Bldg.	1F Department of Economics, Administration Office † 1F MPE OFFICE 3F Seminar Rooms (301-317) 3F Center for Economic and Social Studies in Asia 4F IMAP/Ph.D. Study Rooms (413, 427)
N4-2	Lecture Hall 1	
N4-3	Lecture Hall 2	
N4-4	New Research Bldg.	2F Research Support Office 4F - 5F Economics Faculty Offices

† Graduate School Affairs Office is located in this office.

COLLEGE OF BUSINESS ADMINISTRATION

N3-1	Business Administration Research Bldg.	
N3-3	Lecture Hall 2	
N3-4	Research Bldg.	
N3-5	Lecture Hall 1	

GRADUATE SCHOOL OF INTERNATIONAL SOCIAL SCIENCES [GSISS]

N3-2	Graduate School of International Social Sciences	3F Computer Room (302) 3F Library of International Social Science Studies (304) 5F Doctoral Study Rooms (501, 502, 504) 5F IPhD Study Room (501) 5F Photocopier Room (503) 6F Seminar Rooms (602-609) 7F - 8F Economics Faculty Offices 8F Research Support Office
N4-5	Law Bldg.	

Timetable

Fall 2016

	Mon	Tue	Wed	Thu	Fri
1 8:50- 10:20			Environment and Development (PAC2011), Yamazaki, Bldg. N4-1 #317	Applied International Trade (PAC2005), Parsons, Bldg. N4-1 #317 Thesis Writing (PE00001), Cannon, Bldg. GSISS #603	Macroeconomics I (PAC1002) Watanabe, Bldg. N4-1 #317
2 10:30 - 12:00		Microeconomics I (PAC1001) Mizoguchi, Bldg. N4-1 #317			Statistics I (PAC1003) Murakami, Bldg. N4-1 #317
Lunch Break					

3 13:00 - 14:30		Japanese Culture and Society (PAC2015) , Arie, Bldg. N4-1 #317	Economic Policy (PAC2015) , Nishikawa, Bldg. N4-1 #317	Economic Systems (PAC1004) Uemura, Kizaki Bldg. N4-1 #317	† Basic Japanese 2 (PF10005) , Terao, ISC #104
4 14:40 - 16:10		† Basic Japanese 1 (PF10004) , Nakagawa, ISC #104	† Mathematics for Economists (PF10001) , Go, Bldg. N4-1 #317	Economic Planning and Energy Policy (PAC2017) , Shida, Bldg. N4-1 #317	† Computing for Economists (PF10002) , Vu, Bldg. N4-1 #317
5 16:15 - 17:45		Public Finance (PAC2007) , Mozumi, Bldg. N4-1 #317	Public Economics (PAC2006) , Kondo, Bldg. N4-1 #317		
6 17:50 - 19:20					

7 19:25 - 20:55					
-----------------------	--	--	--	--	--

† These courses are for first-year students only and do not count toward the degree. Basic Japanese 1 and 2 must be taken simultaneously. ISC stands for 'International Student Center'.

* 'Mathematics for Economists', 'Computing for Economists' and 'Economic Planning and Energy Policy' are intensive courses.

Spring 2017

	Mon	Tue	Wed	Thu	Fri
1 8:50 - 10:20			International Economics and Public Policy (PAC2004) , Parsons, Bldg. N4-1 #317	Presentation and Discussion Skills (PE00002) , Carlsen, Bldg. GSISS #603	
2 10:30 - 12:00		Applied Microeconomics (PAC2019) , Mizoguchi, N4-1 #317		World Economy (PAC2009) , Hagiwara, Bldg. N4-1 #317	Macroeconomics II (PAC2022) , Fujio, Bldg. N4-1 #307

Lunch Break					
3 13:00 - 14:30		Applied Econometrics (PAC2018) , S. Zhang, N4-1 #IEP (316)	International Finance (PAC2008) , Sato, N4-1 #317	Microeconomics II (PAC2020) , Muto, N4-1 #315	
4 14:40 - 16:10		Asian and African Economies (PAC2016) , S. Zhang, N4-1 #317			

5 16:15 - 17:45		Statistics II (PAC2021), Nagai, Bldg. N4-1 #I317			
6 17:50 - 19:20					
7 19:25 - 20:55					

Fall 2017

	Mon	Tue	Wed	Thu	Fri
1 8:50 - 10:20				Applied International Trade (PAC2005), Parsons, N4-1 #317	Public Economics (PAC2006), Watanabe, N4-1 #317
2 10:30 - 12:00		Microeconomics I (PAC1001), Mizoguchi, N4-1 #317	Statistics I (PAC1003), Murakami, N4-1 #317	Economic Development (PAC2010), Ujikawa, N4-1 #317	Macroeconomics I (PAC1002), Watanabe, N4-1 #317
Lunch Break					

<p>3</p> <p>13:00 - 14:30</p>	<p>Thesis Writing (PE00001), Cannon, Bldg. GSISS #603</p>	<p>Economic Systems (PAC1004), Uemura and Kizaki, N4-1 #317</p>		<p>† Basic Japanese 1 (PF10004), Hashimoto, ISC 101</p>	<p>† Basic Japanese 2 (PF10005), Kim, ISC 101</p>
<p>4</p> <p>14:40 - 16:10</p>		<p>† Mathematics for Economists (PF10001), Suzuki, N4-1 #317</p>	<p>Economic Policy (PAC1005), Jiang, N4-1 #317</p>		<p>† Computing for Economists (PF10002), Vu, N4-1 #317</p>
<p>5</p> <p>16:15 - 17:45</p>					

6 17:50 - 19:20					
7 19:25 - 20:55					

† These courses are for first-year students only and do not count toward the degree. Basic Japanese 1 and 2 must be taken simultaneously. ISC stands for 'International Student Center'.

* 'Mathematics for Economists', 'Computing for Economists' and 'Economic Planning and Energy Policy' are intensive courses.

Forms

[Questionnaire on Field of Research](#)

[Course Registration Application](#)

[QE/Thesis Track Declaration](#)

[Application for Switching between QE and Thesis Tracks](#)

[Pledge for Academic Conduct](#)

Regulations of the Graduate School of International Social Sciences at Yokohama National University

(Regulations No.33, March 28 2013)

(Purpose)

(Purpose)

Article 1

Subject to the provisions of Articles 11 and 12 of the School Regulations of Yokohama National University (Regulations No. 202 (2004); hereinafter referred to as “Graduate School Regulations”), the purpose of these Rules shall be to regulate courses, the numbers of credits, and methods of undertaking courses, etc., for specialties of the Graduate School of International Social Sciences at Yokohama National University (hereinafter referred to as the “Graduate School”) and necessary matters for the Graduate School, provided, however, that matters related to the Law School/ Graduate School of International Social Sciences at Yokohama National University shall be subject to the provisions of the Detailed Regulations for the Law School/ Graduate School of International Social Sciences, Yokohama National University.

(Courses, etc.)

Article 2

- 1 Courses and the number of credits for departments at the Graduate School shall be separately regulated by the Dean of the Graduate School of International Social Sciences at Yokohama National University (hereinafter referred to as the “Dean”) with input from the faculty council (hereinafter referred to as the “ Faculty Council”).
- 2 15 hours of classes in courses (lectures and seminars) at the Graduate School shall constitute a single credit.
- 3 The term “academic dissertation(s)” refers to master's theses and doctoral dissertations and includes the research outcomes of specific assignments given in connection with master's theses (hereinafter referred to as “Theses for Specific Assignments” in plural form or “Thesis for Specific Assignment” in singular form).

(Flexible Curriculum across Departments)

Article 3

- 1 Systematic educational programs related to multi-specialty fusion fields and specific assignments (hereinafter referred to as the “Flexible Curriculum across Departments”) shall be assigned in Ph.D. Programs.
- 2 The Flexible Curriculum across Departments regulated under the previous paragraph shall include those under the following Items.
 - (1) International Public Policy Education Programs
 - (2) Tax Law and Accounting Educational Programs
- 3 Matters necessary for the Flexible Curriculum across Departments shall be separately regulated by the Faculty Council.

(Advisors, etc.)

Article 4

- 1 In order to teach classes for Master's Programs and provide guidance for courses and the writing of academic dissertations (doctoral dissertation research proposal or term papers for persons who undertake the Qualifying Exams), (hereinafter referred to as "Research Guidance"), an advisor shall be allocated to each student.
- 2 In order to teach classes and provide Research Guidance for Ph.D. Programs, a single thesis advisor and two other advisors (hereinafter referred to as "Thesis Advisor" and "advisors") shall be allocated to each student.
- 3 Thesis Advisor and advisors shall organize an advisors' committee for the student.
- 4 Matters necessary for advisors, Thesis Advisors, etc., and advisors' committees shall be separately regulated by the Faculty Council.

(Progression of the Program)

Article 5

Students must obtain the credits prescribed by the Faculty Council, with the guidance of the advisors and Thesis Advisors.

(System for Extending the Period of Registration)

Article 6

If students desire to extend the Period of Registration subject to Article 14 of the Graduate School Regulations, they must apply for permission from the head of the Graduate School in accordance with separate regulations.

(Undertaking of Courses at Graduate Schools of Other Universities, etc.)

Article 7

- 1 Students may take courses at graduate schools belonging to other universities (throughout, this includes foreign graduate schools) or at other graduate schools of this university after obtaining the approval of the Faculty Council.
- 2 Credits obtained for courses undertaken in accordance with the provisions of the previous paragraph may be accepted toward the completion of relevant programs, up to a prescribed number of credits.

(Undertaking Courses at Foreign Graduate Schools During Leaves of Absence)

Article 8

- 1 If it is deemed useful, credits obtained for courses undertaken at foreign graduate schools during leaves of absence may be accepted toward the completion of specific courses at the Graduate School after obtaining the approval of the Faculty Council.
- 2 The number of credits deemed to have been acquired in accordance with the provisions of the previous paragraph shall not exceed 10 credits per student, including the number of credits under the provisions of paragraph 2 of the previous Article.

(Research Guidance of Graduate Schools of Other Universities, etc.)

Article 9

1 Students may undertake research guidance at graduate schools of other universities or research institutes (hereinafter referred to as “Other Graduate Schools, etc.”) after obtaining the approval of the relevant faculty; provided, however, that if students in a Master’s Program are allowed to receive such Research Guidance, the period in which they may undertake the corresponding Research Guidance shall not exceed one year.

2 Subject to the provisions of the previous paragraph, it shall be possible to recognize Research Guidance undertaken at Other Graduate Schools, etc., as a part of the research guidance necessary for completion of the relevant Program.

(Requirements for Completion)

Article 10

1 With regard to the requirements for completion of a Master’s Program, a student must be enrolled in the Program for more than two years, obtain 32 or more credits, satisfy the separately set standard of a Grade Point Average (GPA) of 2.0 or higher, undertake the relevant Research Guidance, and, thereafter, pass an examination on research outcomes concerning the student’s master’s thesis (i.e., the Thesis for Specific Assignment) and specific assignment, as well as a final exam; with regard to the period of enrollment, it shall be sufficient for a student who has achieved particularly superior research performance to be enrolled in the Graduate School for a minimum of one year.

2 Notwithstanding the provisions of the previous paragraph, with regard to the requirements for completion of a Master’s Program by a student who has been allowed to extend the Period of Registration under the provisions of Article 6, such a student shall be enrolled for the corresponding period while undertaking the same, obtain 32 credits or more, satisfy the separately regulated standards for a GPA of 2.0 or higher, undertake the relevant Research Guidance, and, thereafter, pass an examination on research outcomes (i.e., the Thesis for Specific Assignment) related to a master’s thesis and specific assignment, as well as a final exam.

3 For a student who desires to take the Qualifying Exams, instead of passing an examination on research outcomes for a master’s thesis and specific assignment (i.e., the Thesis for Specific Assignment) and a final exam as described above, such a student shall be allowed to take a test and examination on basic research skills to earn a doctoral dissertation given by the Graduate School, as described in (1) and (2) below. In such a case, the expression “....obtain 32 credits or more...” above shall be changed to read “...obtain 36 credits or more...” and the expression “...undertake the relevant Research Guidance, and, thereafter...” shall be changed to read “...undertake the relevant Research Guidance, successfully gain acceptance for a doctoral dissertation research project plan or pass a term paper, and, thereafter....”

(1) The test will ascertain the candidate’s advanced expertise in relation to the relevant specialty field and basic background knowledge in associated fields, which should be acquired or cultivated in the corresponding Master’s Program.

(2) The examination will assess abilities necessary to carry out research on the student’s own initiative at a level appropriate for doctoral dissertations, which should be acquired in the corresponding Master’s Program.

4 With regard to the requirements for completion of Ph.D. Programs, a student must be enrolled in the program for more than three years (or only two for a student who has completed a professional degree program such as Law School), obtain 20 credits or more, have a GPA of 2.0 or higher, undertake the relevant Research Guidance, and, thereafter, pass a doctoral dissertation examination as well as a final exam; however, for a student who has achieved particularly superior research performance the minimum period of enrollment shall be one year.

5 Subject to the proviso in paragraph 1, with regard to the requirements for completion of a Ph.D. Program for a student who has completed a Master's Program in a period of less than two years due to particularly superior research performance (including students with a period of enrollment in another graduate school), the term "one year" in the previous paragraph shall be changed to read "more than the period resulting when the period of enrollment in the corresponding Master's Program (and limited to a period of no more than two years) is deducted from three years."

6 With regard to the requirements for completion of a Ph.D. Program for a student who has completed a Master's Program, or a professional degree program at another graduate school for which the standard period is between one and two years, the term "one year" in paragraph 4 shall be changed to read "the period resulting when the period of the Master's or professional program is deducted from three years."

7 Notwithstanding the provisions of the previous three paragraphs, with regard to the requirements for completion of a Ph.D. Program for a student who has been allowed to extend the Period of Registration under the provisions of Article 6, that student shall be enrolled for the corresponding period while undertaking the same, obtain 20 credits or more, maintain a GPA of 2.0 or higher, undertake the relevant Research Guidance, and, thereafter, pass a doctoral dissertation examination as well as a final exam.

8 Examinations for academic dissertations shall be subject to the Regulations on Academic Degrees of Yokohama National University.

(Period for Submission of Academic Dissertation)

Article 11

Academic dissertations and documents required by the Faculty Council must be submitted within a period determined by the Graduate School.

(Administration Affairs)

Article 12

Administration affairs for the Graduate School shall be handled by the Social Science Administration Department.

(Miscellaneous Provisions)

Article 13

In addition to the information provided hereunder, matters related to the Graduate School shall have additional requirements set by the Faculty Council.

Supplementary Provisions

These Regulations shall become effective on April 1, 2013.